

2020
Revisions &
Additions
for
***The Greeting Cards of
Rockwell Kent***
2013

Robert
Rightmire



102

Untitled

1912

Holiday card for Kathleen and Rockwell Kent

Image: 5 1/2 X 3 1/8 inches

Sheet: 6 X 3 9/16 inches

Preliminary drawing

Image: Standing woman with baby

Text on front: "On earth peace/good will toward men/Greetings from Kathleen/ and Rockwell Kent/Nineteen hundred & twelve"

Rarity 7

CoLU: photocopy

PSW: Proof

PMA 1971-2-163 (photomechanical reproduction of drawing with hand coloring)

Revised text



112

ca. 1915

See: 109 for same image

4 ¼ x 6 inches

Image: 3 1/2 x 3 1/16 inches

Buff card stock, black ink

Linecut after an ink drawing hand lettered inscription

PSU: Special Collections, series 8B, KL4

Photocopy from files of George & Gladys Spector

Rockwell Kent's Egypt, Shadow in Vermont, Jake M Wein, 2012 (catalogue no. 16)

Rarity 6

Revised text



113

ca. 1917

6 ¼ x 7 ¼ inches

Cream-colored stock, black ink

One example was found among the affects of Hildegard Hirsch. signed inside "With best wishes, Rockwell"

Exhibited: Rediscovering Rockwell Kent: /Books, Graphic and Decorative Arts/

Selections from the Collection of Elliot H. Stanley/ Grolier Club/

Fall 1997, no. 74.

PMA: 1971-2-249

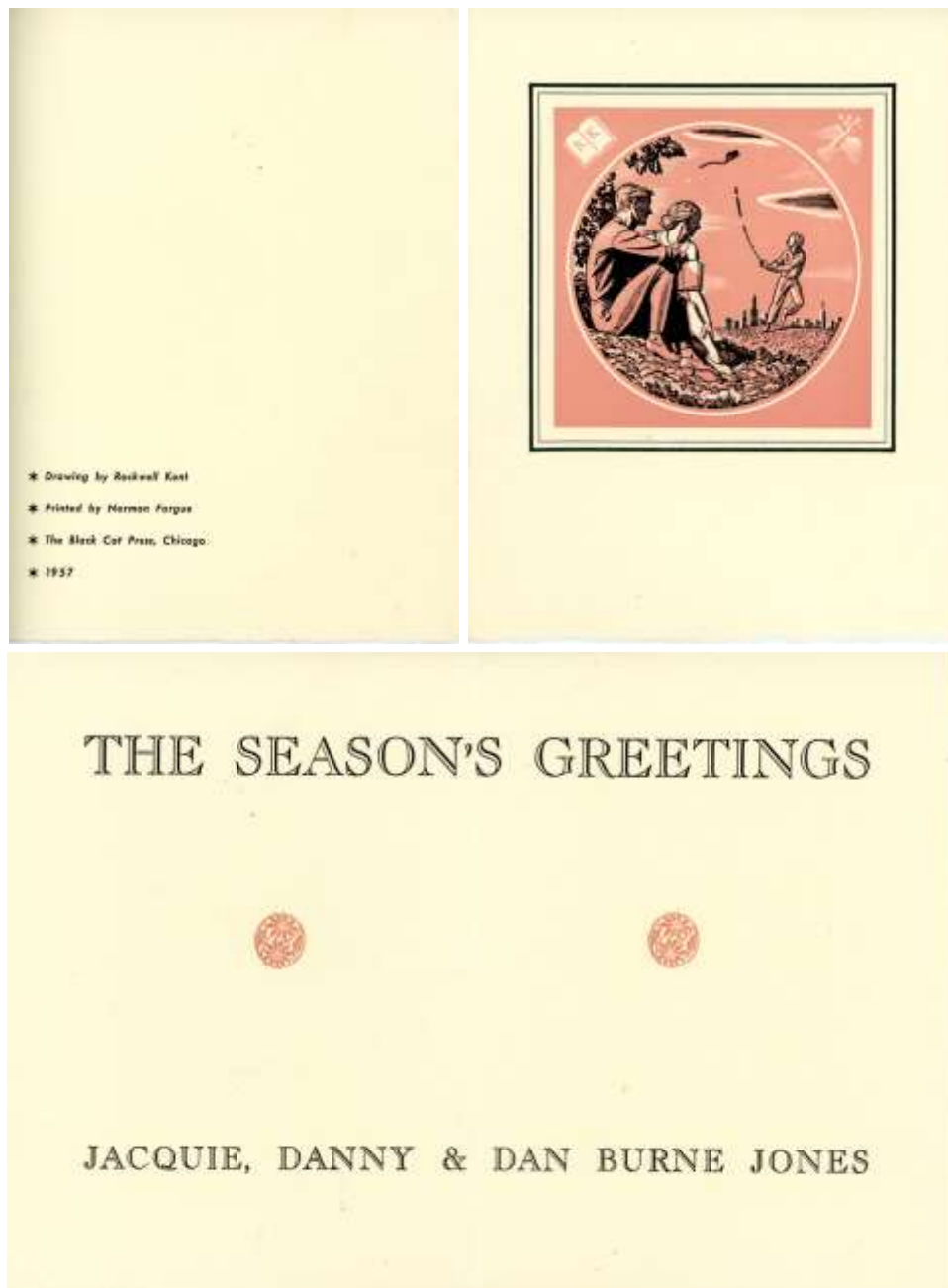
Note: Duplicated after Kent's death; only two examples from 1917 have been found.

Later card of the same design was printed on thin stock, smaller in size and not printed with the same bold black ink as the original.

Private collection

Rarity 6

New card



163

1957

Sheet: 11 x 8 ½ inches, folded twice

Light cream color paper

"Drawing by Rockwell Kent" on back

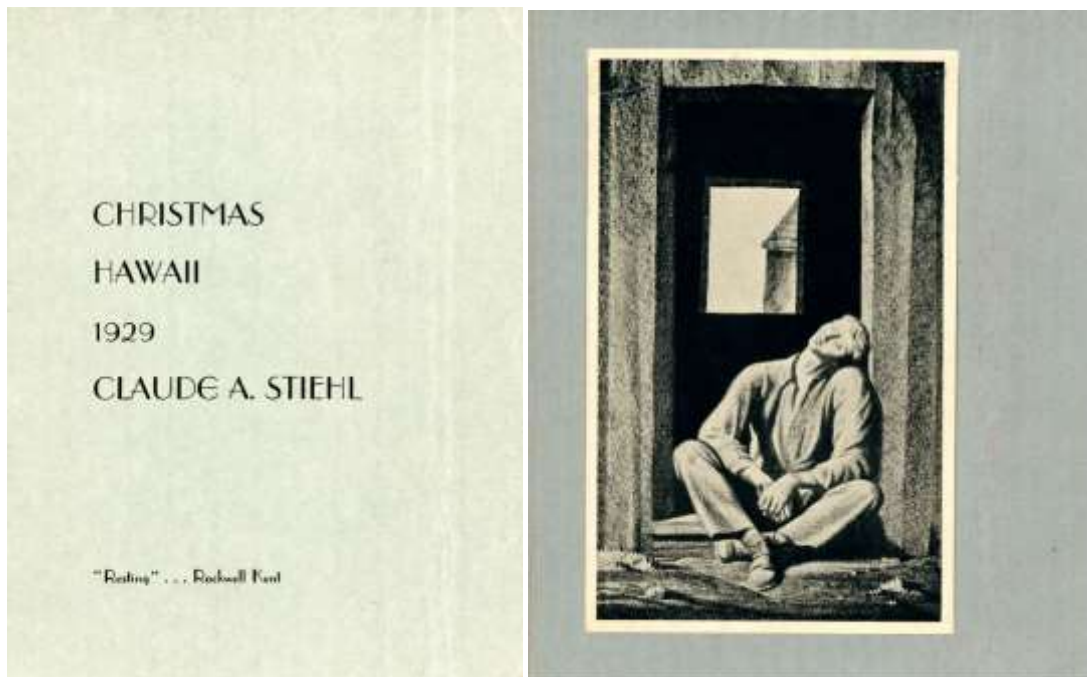
Secondary use of Dan Burne Jones' Rockwell Kent bookplate

Rarity 5

6

© Robert Rightmire 2021
The Rockwell Kent Forum (www.rockwellkent.us)

New card



164

1929

CHRISTMAS/HAWAII/1929/CLAUDE A. STIEHL

“Resting”...Rockwell Kent

5 7/8 x 4 7/8 inches

Sheet: 9 3/4 x 7 5/8 inches

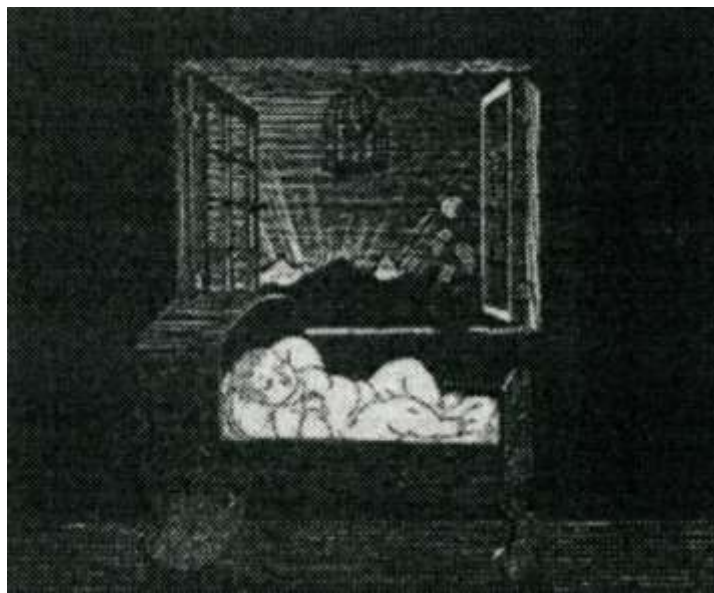
Light gray ribbed heavy weight paper

Image tipped on, 5 1/16 x 3 3/16 inches

Print no.36 from the same year

Rarity 7

New card



165

1936

Untitled

Birth announcement

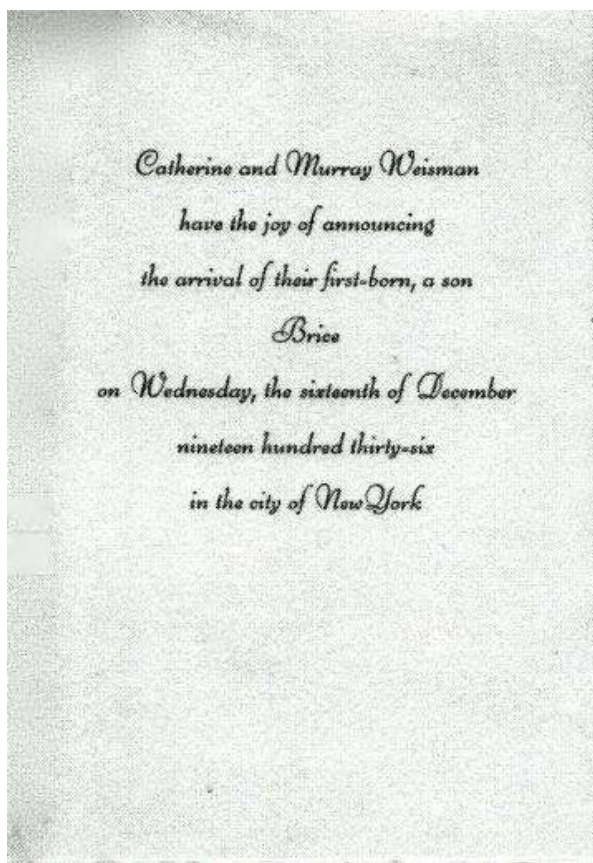
for Brice Weisman

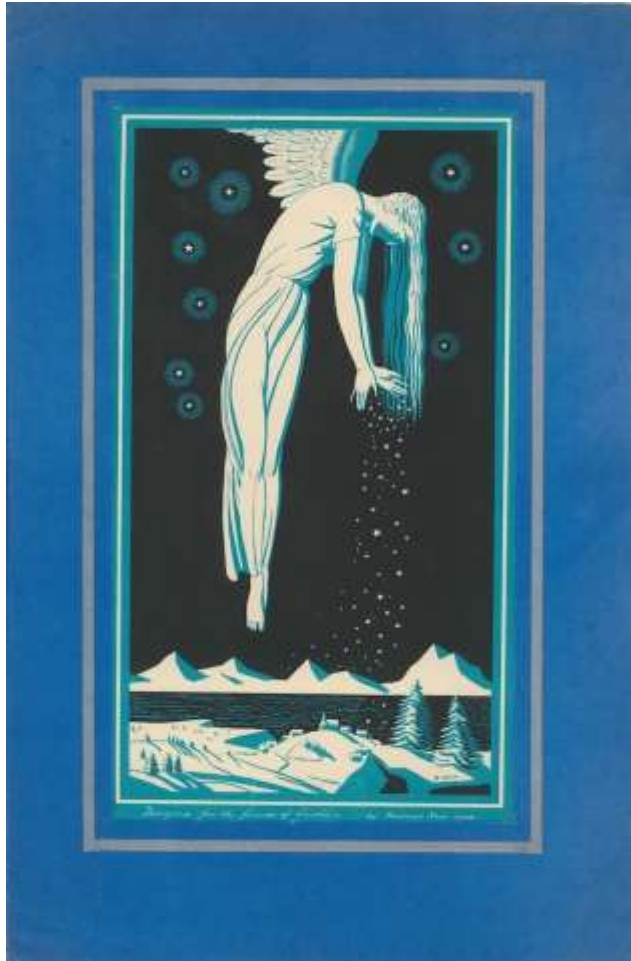
Size & paper unknown

From an ink drawing

Scan of photocopy (not to scale)

Rarity 7





Replaces image
and text
for card no. 202

202

1928

Untitled

Card: 13 ¾ x 7 15/16, cream card stock, deckle edge a bottom

Frame: 13 ¾ x 17 14/16 ", sheet folded once with opening for card;
light weight blue paper with silver outline of opening.

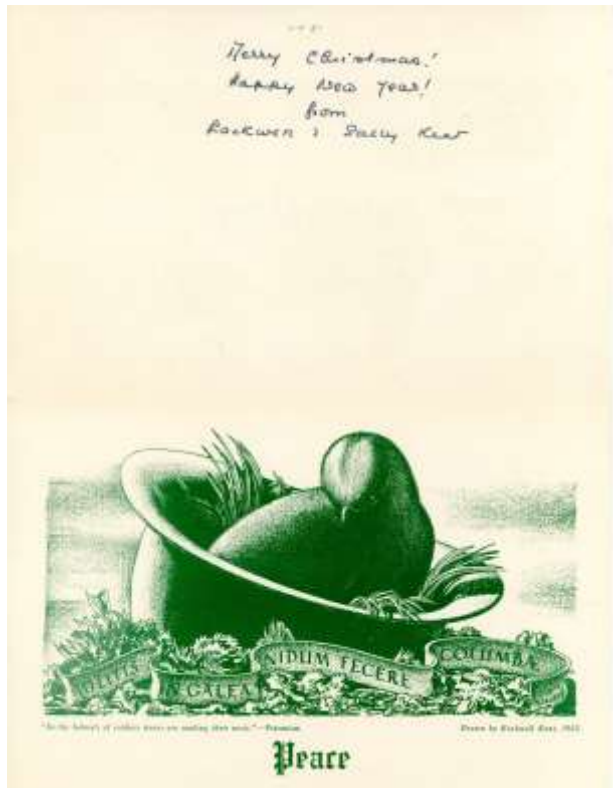
Insert: "Please accept in token of our sincere holiday greeting/ this
Christmas card designed by Rockwell Kent for/ the friends of/
Lenthéric Paris/ **SAVOY-PLAZA FIFTH AVENUE AT 58 STREET/
New York, December 1928."**

PSU:series 8D, L8

CoLU

Rarity 6

New card



Opened: image on inside, at bottom

206.3

c.1953

Greeting on front, Peace inside

Sheet: 11 x 8 1 ½ inches, folded to 5 ½ x 8 ½ inches

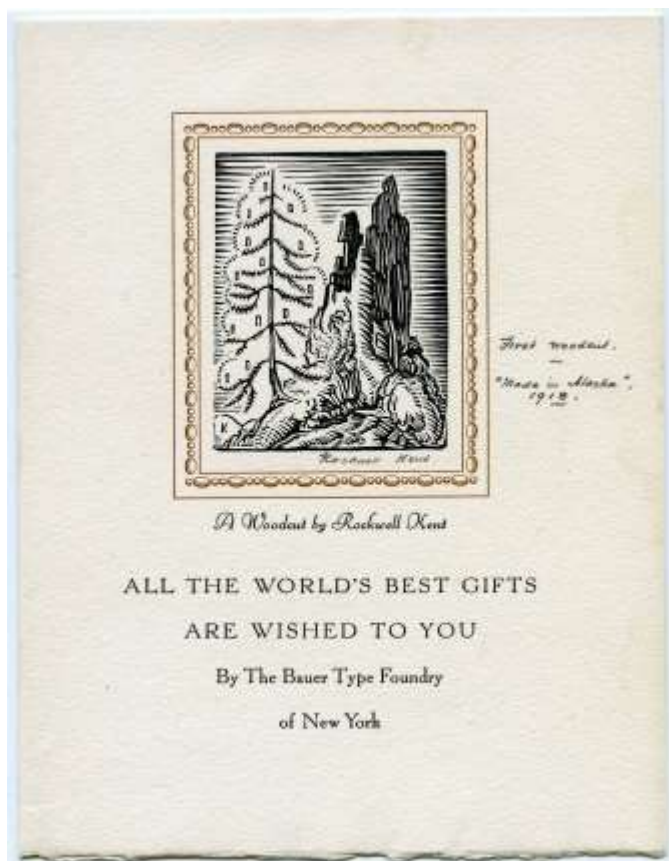
Light cream color paper

Kent used as his personal card. Examples have message in Kent's hand.

Personal collection

Rarity 6

New card



236

c. 1928

Untitled

6 ¼ x 4 11/16"

(full sheet [12 3/8" x 9 3/8"]

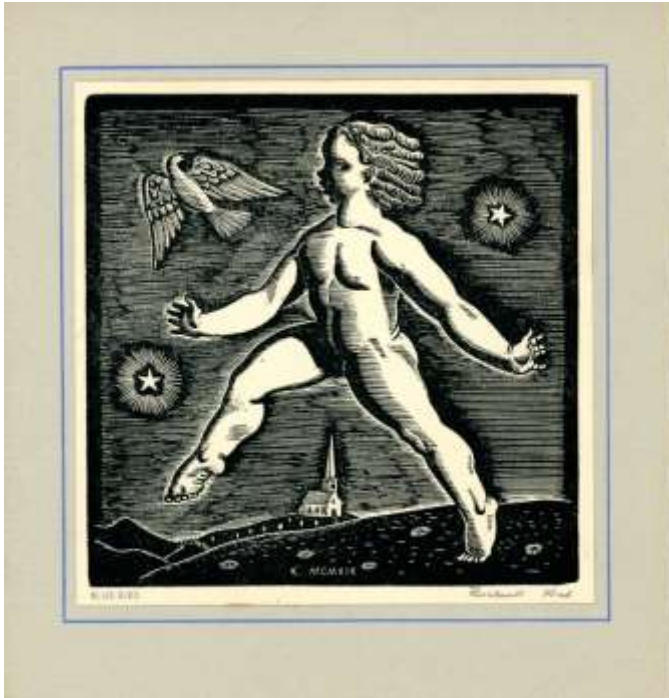
folded in quarters

Bauer Type Foundry

"A Woodcut by Rockwell Kent"

Courtesy of Jake M. Wien, 2014

Revised text



305

BLUEBIRD

6 5/8 x 6 3/8 inches

American Artist Group no. 2508

Gray card stock, black ink
blue frame; deckle edge on right

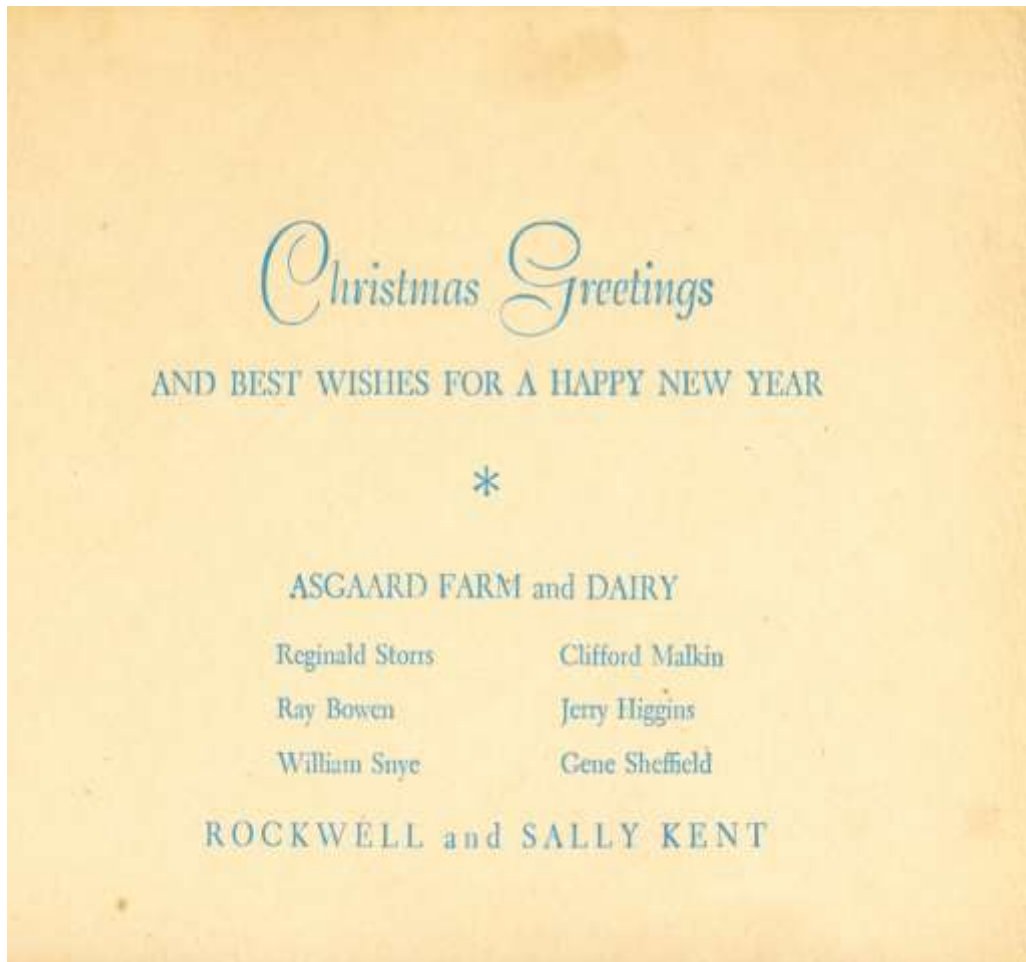
Reverse: black ink "R.K. 1935"

Image from print no. 1
in RK box, ca. 1940

Private collection

Rarity 5

New card

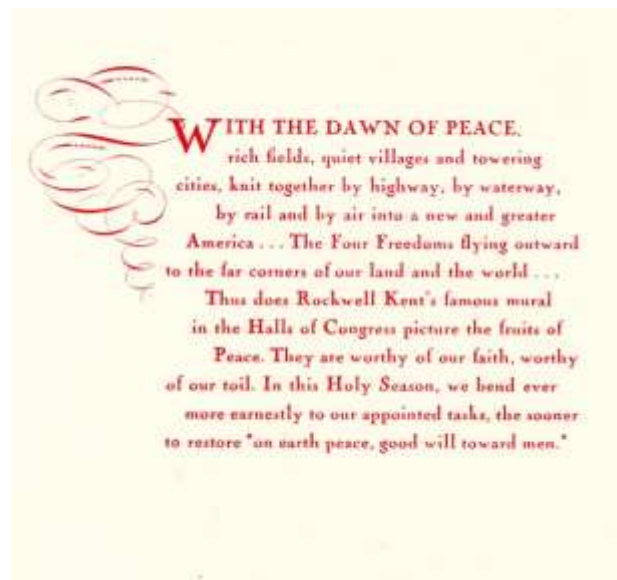


336.1

Front of card is as no. 336 with identical information
Text inside identifies the workers at Asgaard Farm and Dairy.

Card was sent by Rockwell and Sally Kent

New card



405

ca. 1943

Untitled (Transportation Mural)

Sheet: 14 9/16 x 12 12/16 inches, folded twice

Deckle edge on right

Light cream paper stock

In red, last line....Thus does Rockwell Kent's famous Mural in the Halls of Congress"

Rarity 6